

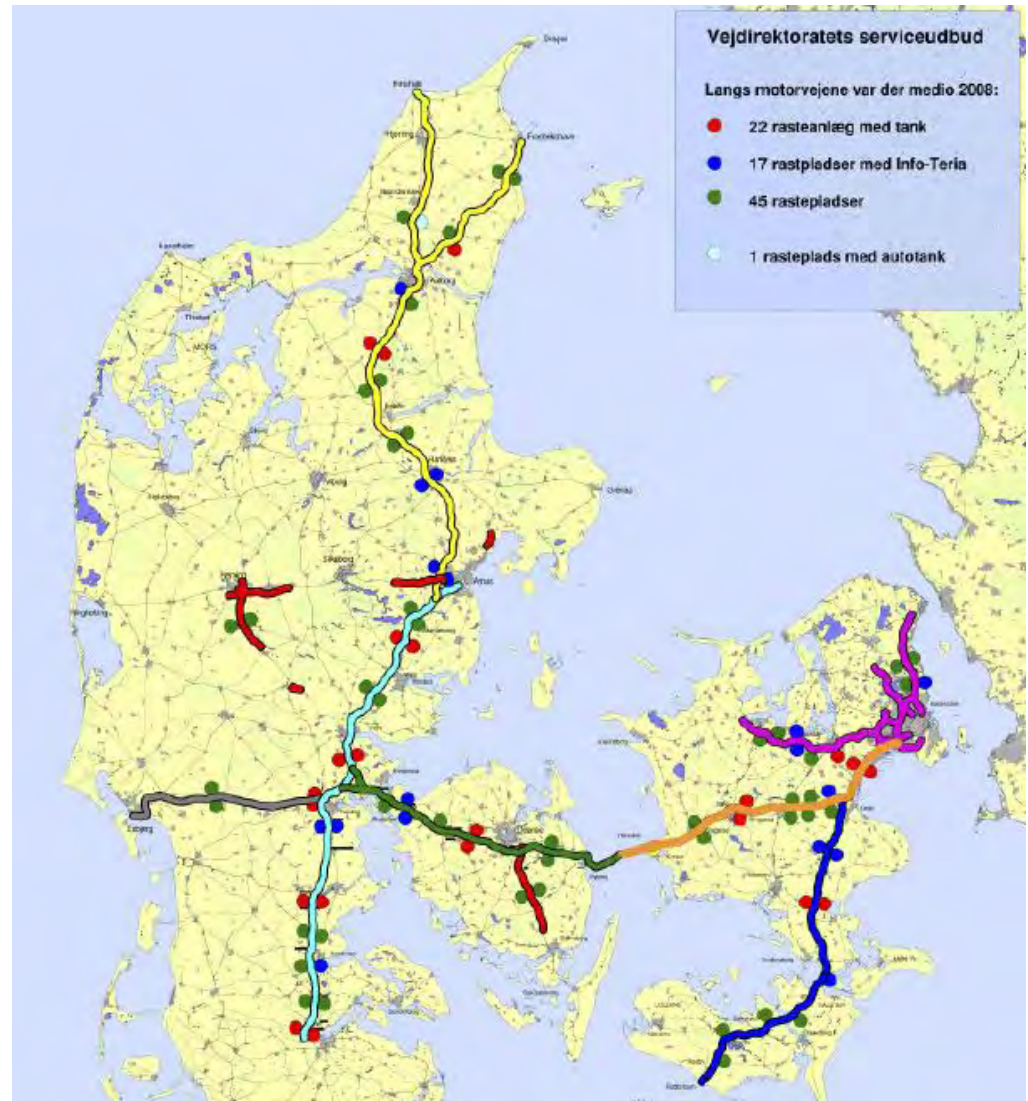
Ustrup East – Rest area

From ordinary rest area to ITP



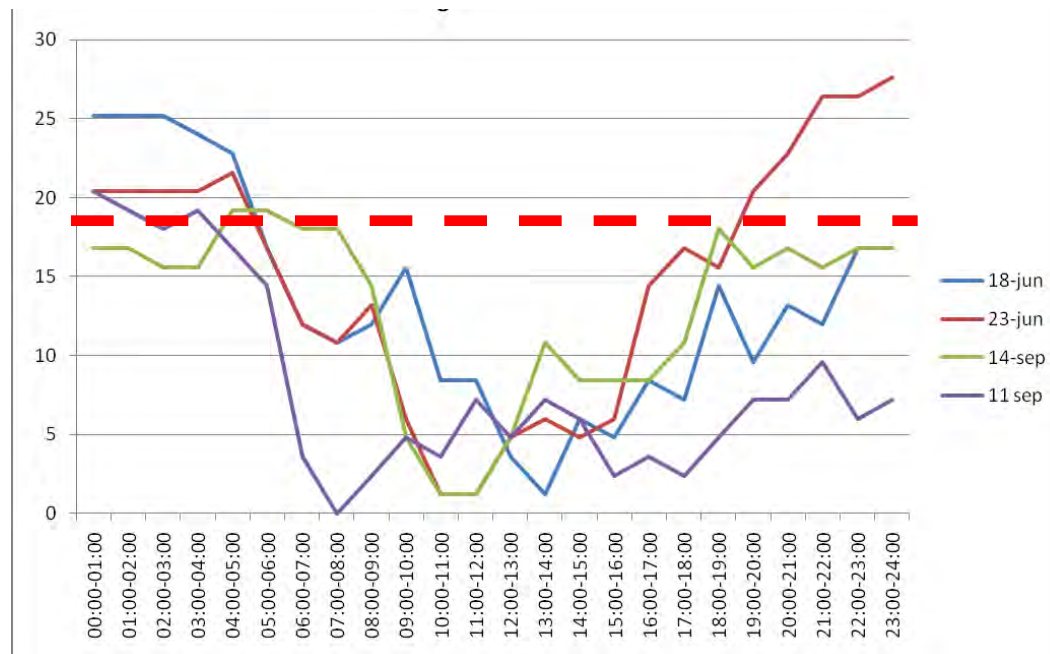
Rest areas

- Rest areas on the highway network



Ustrup East - Today

- 19 truck spaces
- Parking utilization of about 150%

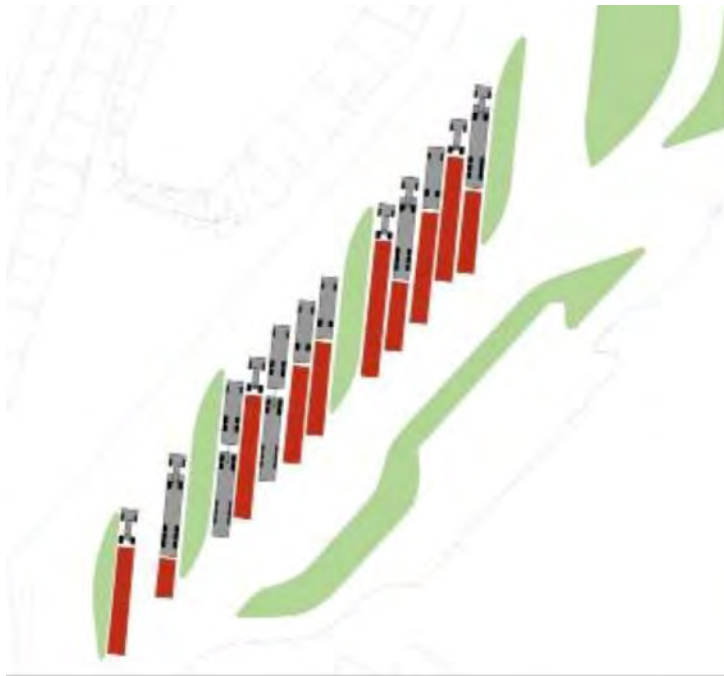


Ustrup East - Today

- No space for modular road trains
28 m long trucks
- The rest area is generally in poor condition



Utilizing space with ITP



Traditional layout

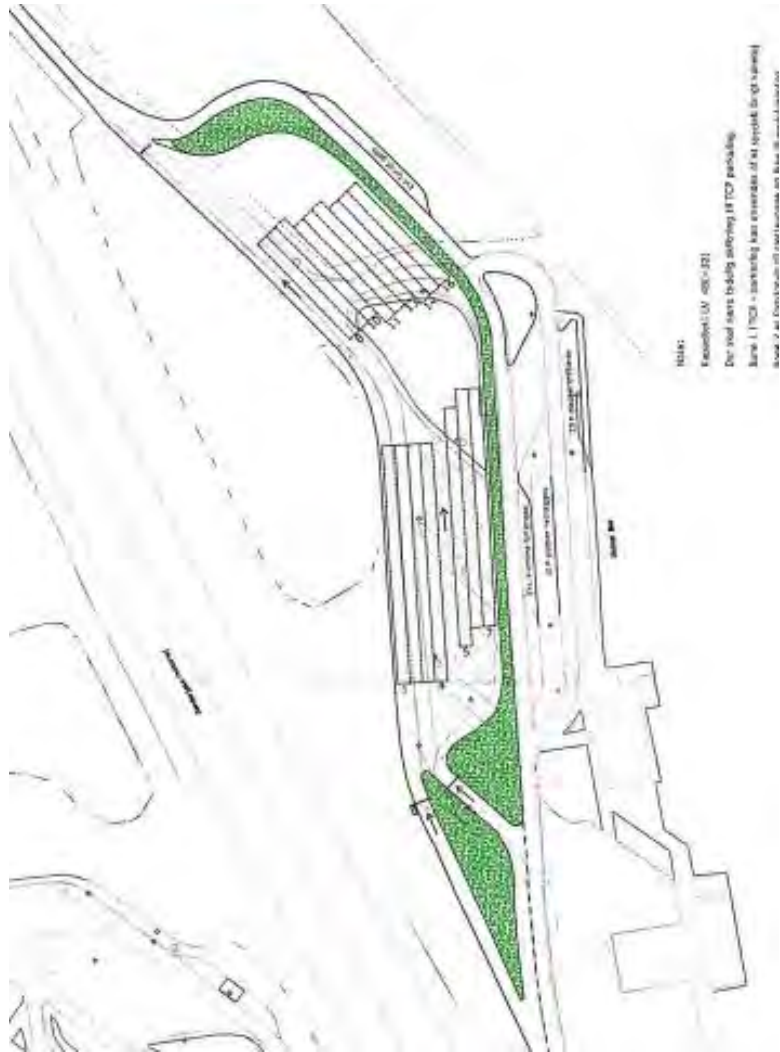


Layout with ITP

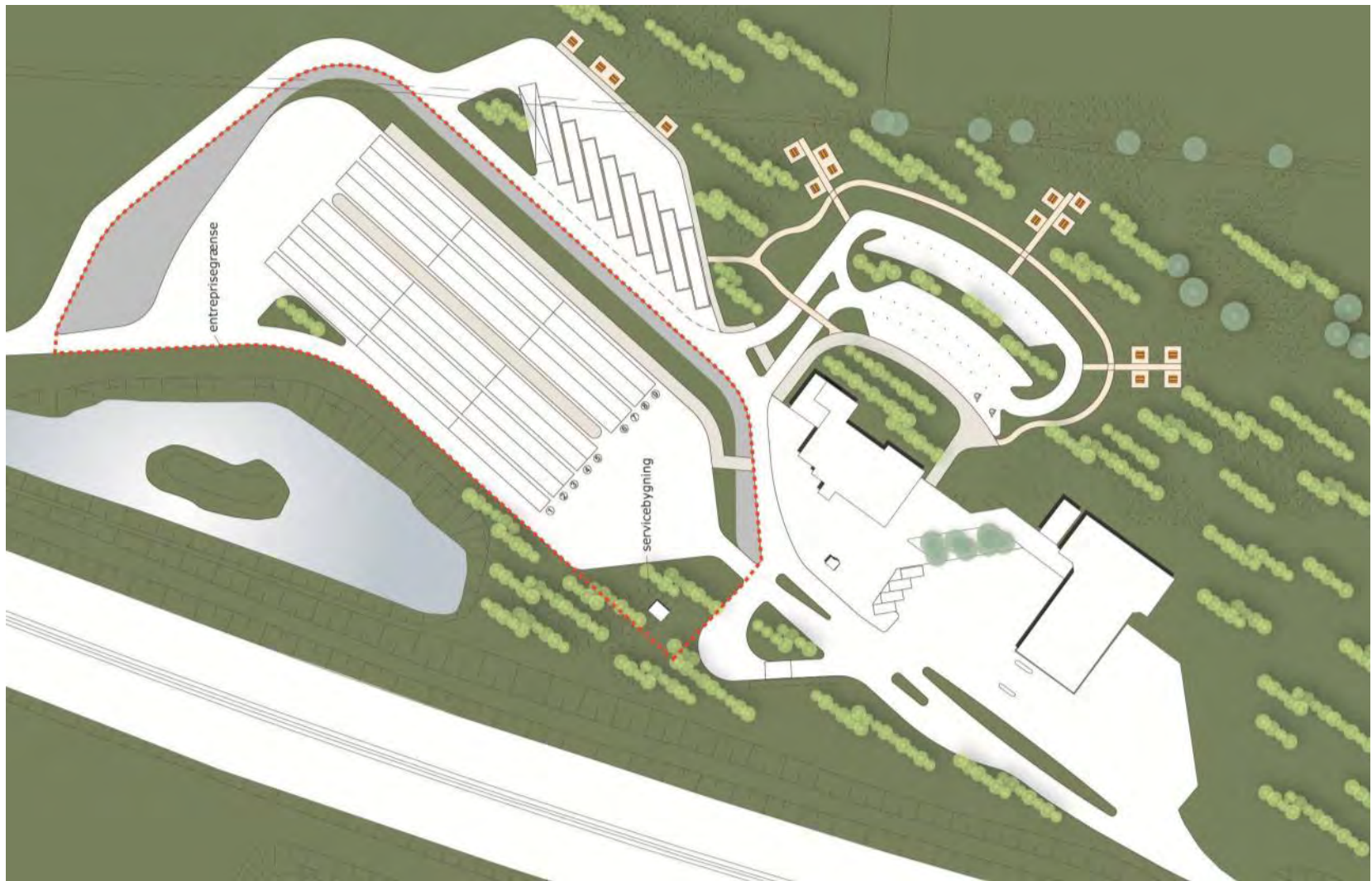
ITP – the process

- Initial layout
- Field trip to Germany
- Workshop with interested parties
- EU-Tender process

Initial Layout



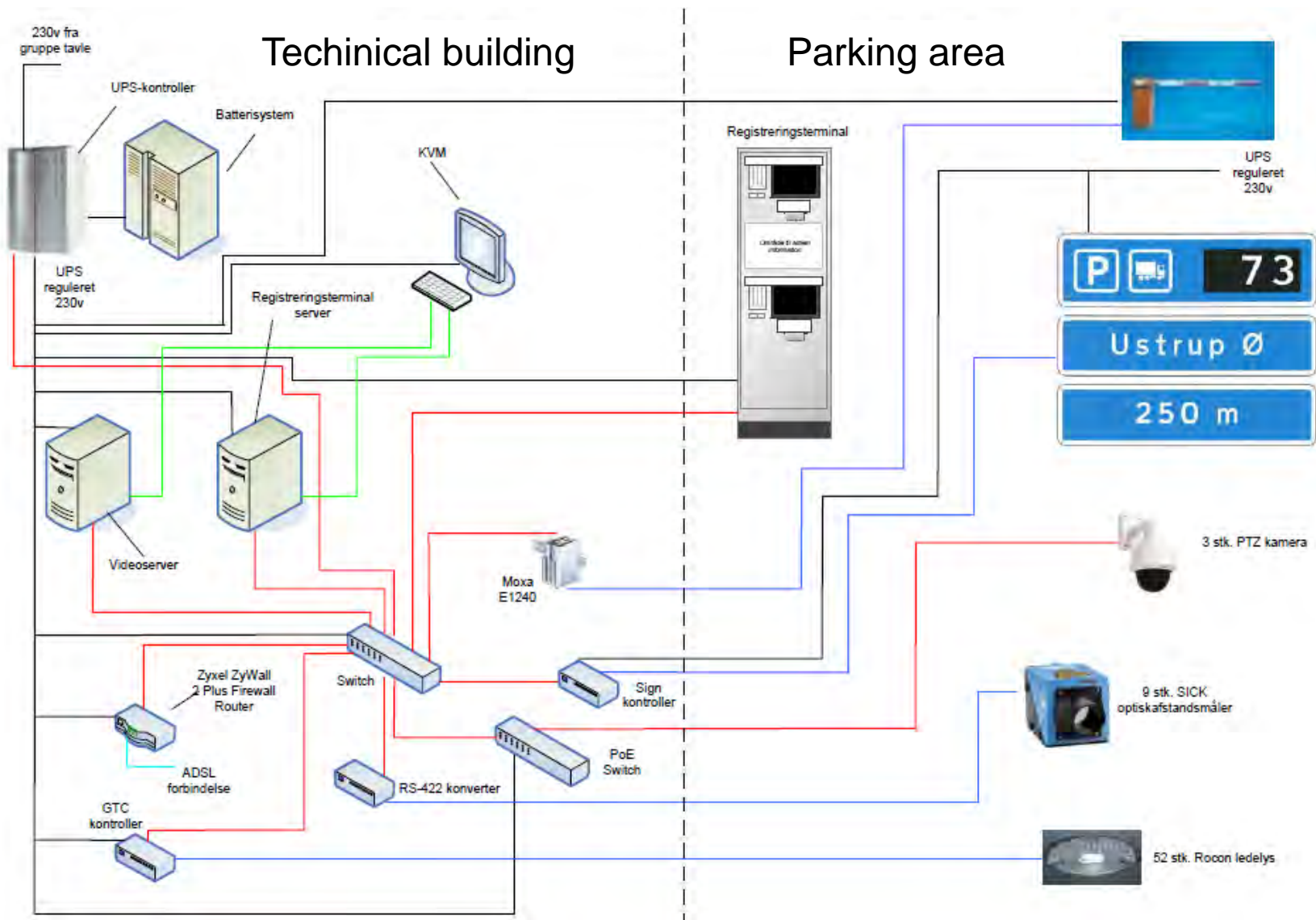
Ustrup East, Final layout



ITP - Landscape

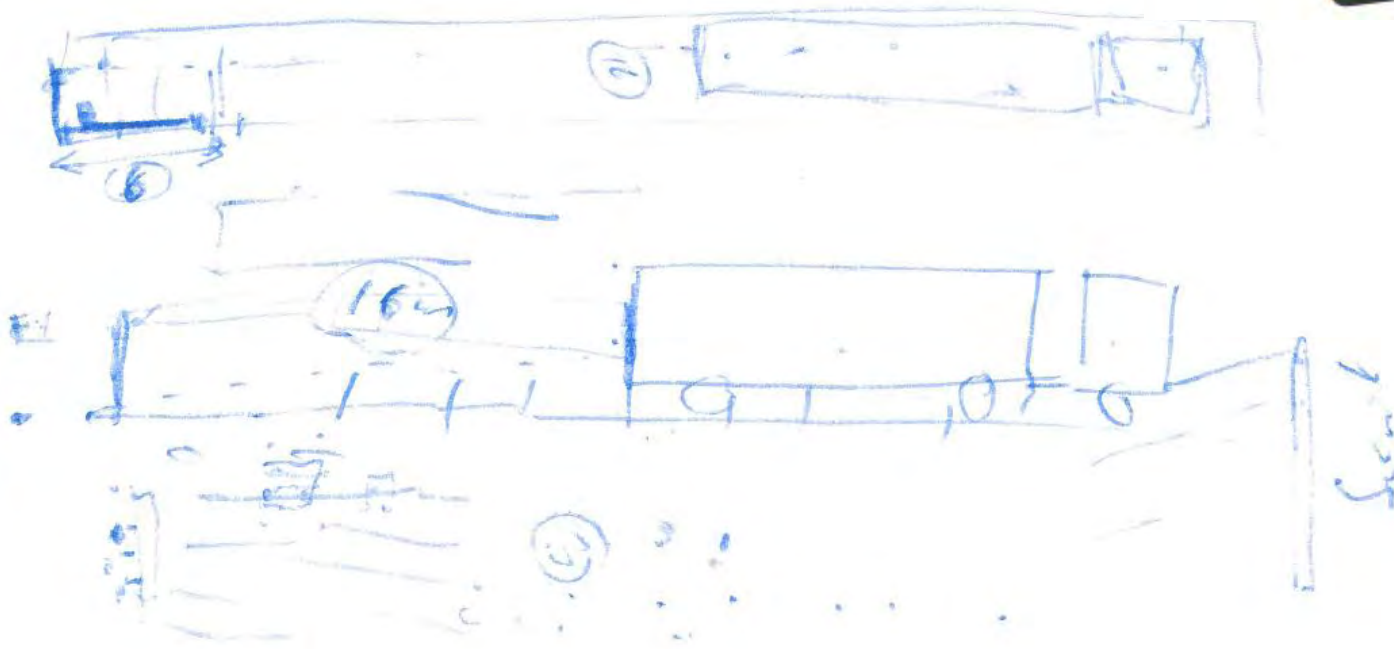


Technical features



Technical features

- Laser detection of lane occupancy



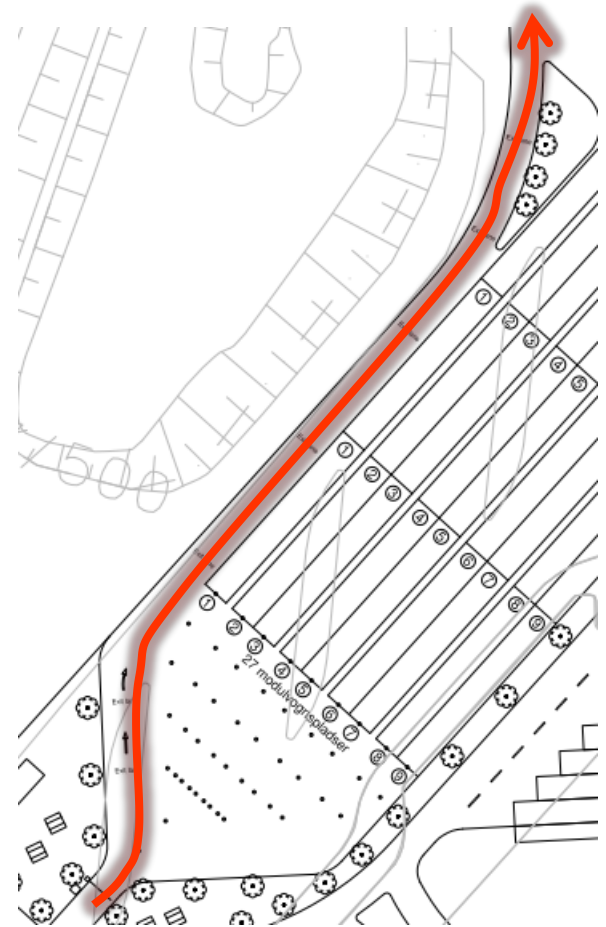
ITP – user friendly

- LED- for correct lane



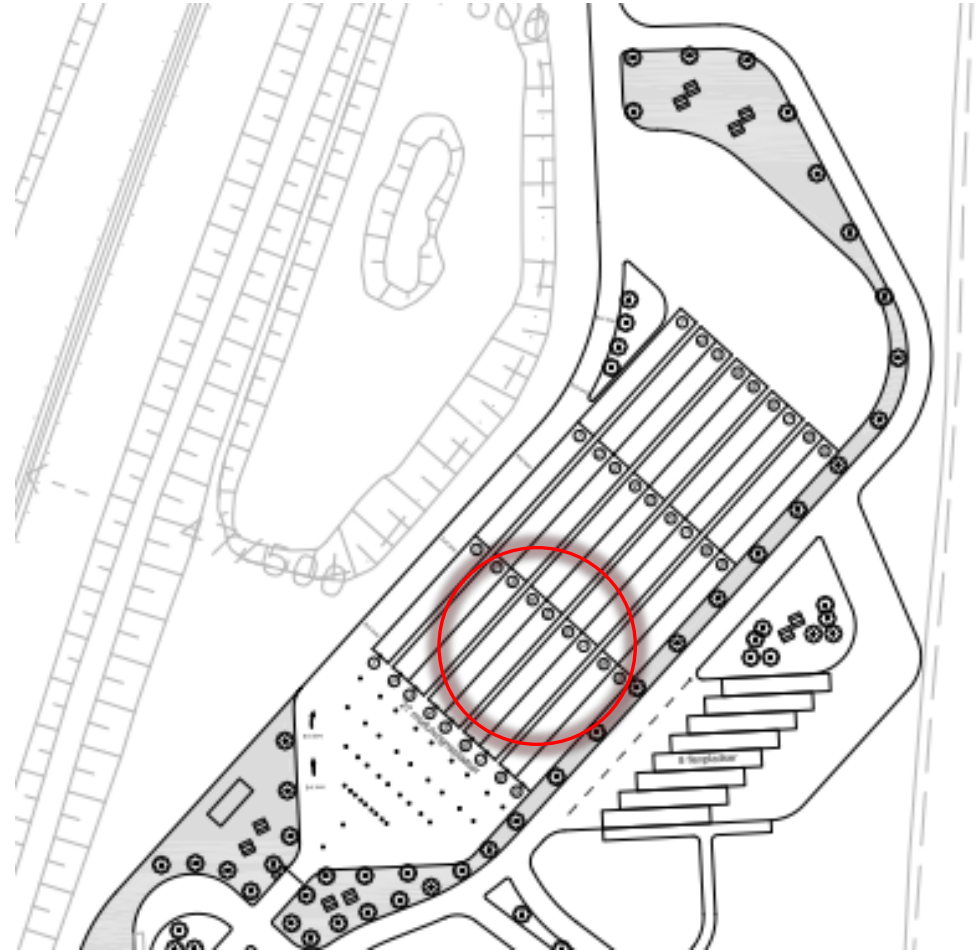
ITP – user friendly

- EXIT lane



ITP – user friendly

- Safety zone



ITP – Future additions

- Booking
- Navigation (TMC)
- Member deals (ie discount)

ITP - Time schedule

- Preparation of system 2010
- Construction work on site 2010-2011
- 5 year service period